

Chevy Camaro Slot Car Kit Assembly Guide

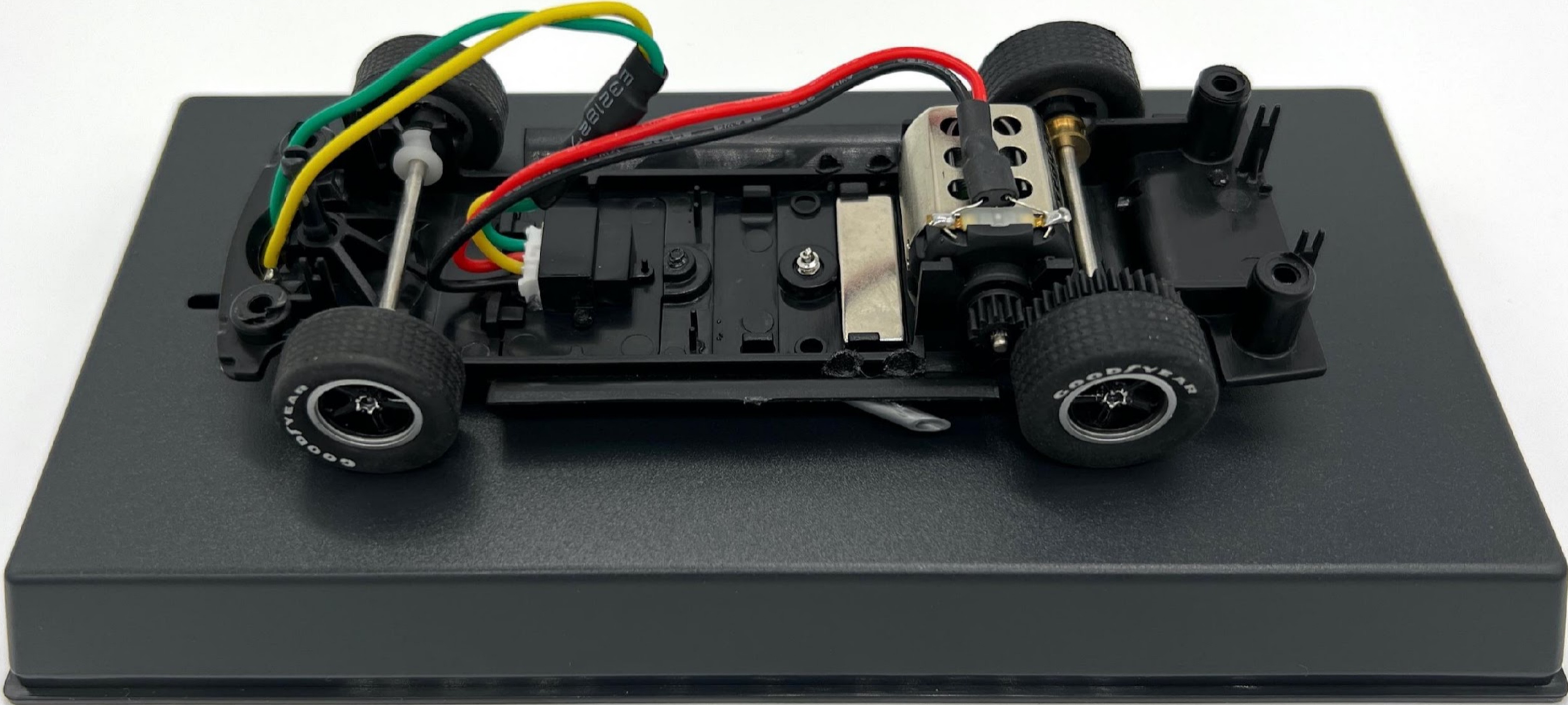
Two main
assembly procedures:

- 1/ Cockpit Interior
- 2/ Upper Body



PAINT IT YOURSELF KIT

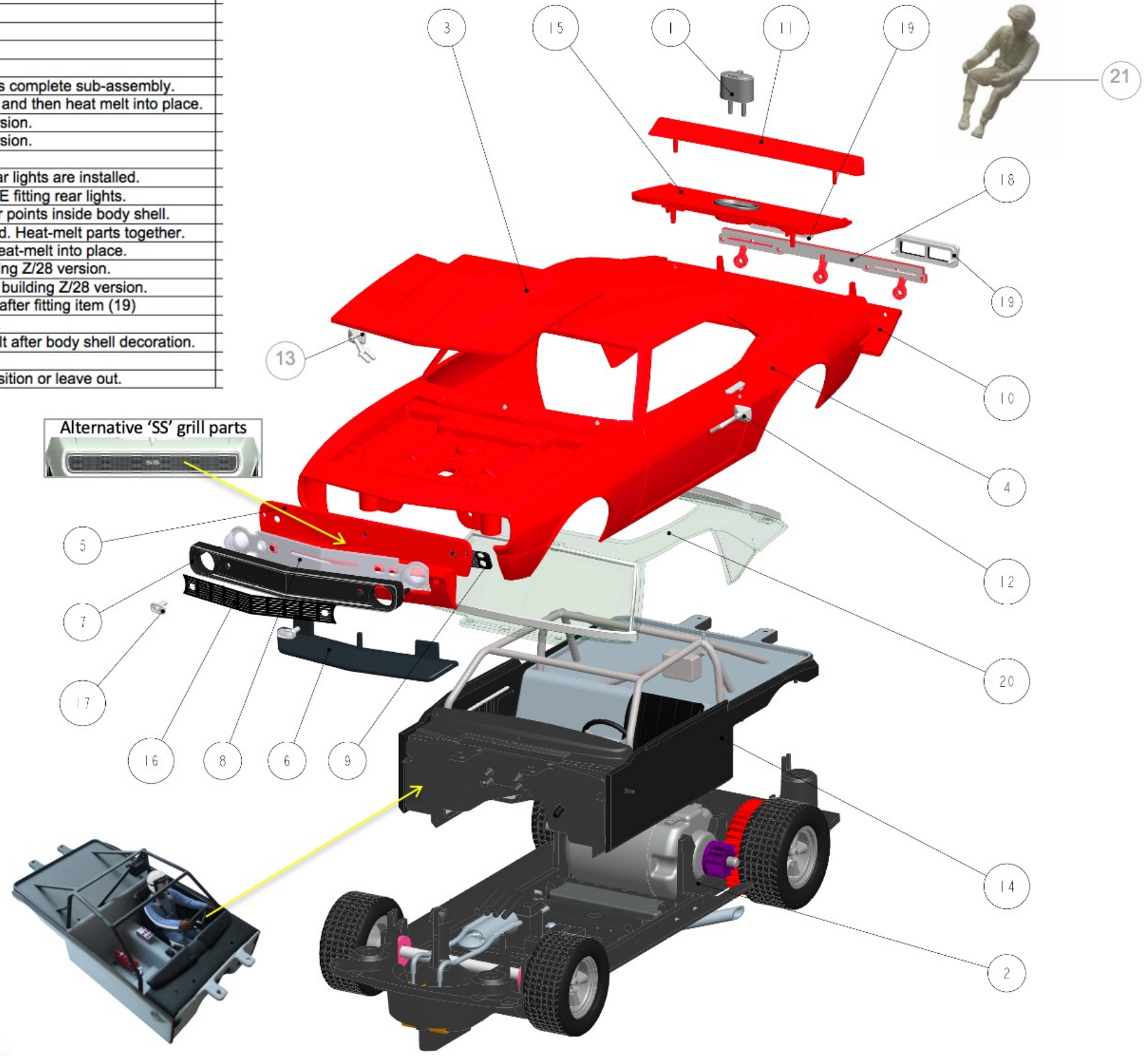
Chassis – Supplied Fully Assembled and Ready To Run



ITEM	NAME	QTY.	Action
1	Fuel Filler Cap	1	Heat-melt (if required).
2	Chassis	1	Ready to run.
3	Bonnet/Hood	3	Choose style & fit.
4	Body	1	Ready to paint.
5	Front Valance	1	Choose grill type & then fit as complete sub-assembly.
6	Front Spoiler	1	Trim fixing blades by 1.0mm and then heat melt into place.
7	Headlight Housing	1	Used for 'Headlight' Z/28 version.
8	Headlight Bar	1	Used for 'Headlight' Z/28 version.
9	Lower Metal Grill	1	Fit into item (5).
10	Rear Valance	1	Heat-melt into place after rear lights are installed.
11	Rear Spoiler	1	Heat-melt into place BEFORE fitting rear lights.
12 & 13	Door Mirrors	2	Fit if desired, use drill marker points inside body shell.
14	Interior Cockpit	1	Various components supplied. Heat-melt parts together.
15	Boot/Trunk Lid	2	Choose style required and heat-melt into place.
16	Front Metal Grill	1	Use this with item (7) if building Z/28 version.
17	Spotlights	2	Use round or oblong types if building Z/28 version.
18	Rear Light Bar	1	Paint red and slot into place after fitting item (19)
19	Rear Light Trim	2	Heat-melt onto rear light bar.
20	Glass Unit	1	Click into place and heat-melt after body shell decoration.
21	Driver	1	Paint and glue as desired.
22	Rear Bumper	1	If required, heat-melt into position or leave out.

Chevy Camaro 1968 Race Car

Make Z/28 or SS style



Expanded view of all kit elements.



Look out for my
Top Tips
throughout this
guide.



Parts Bags Included in the Chevy Camaro KIT

Bag A – Sticker Sheets
(styles may vary)



Bag B – Interior Parts for
Cockpit

Bag C – 3 Bonnet/Hood Options, 2 Boot/Trunk
Options

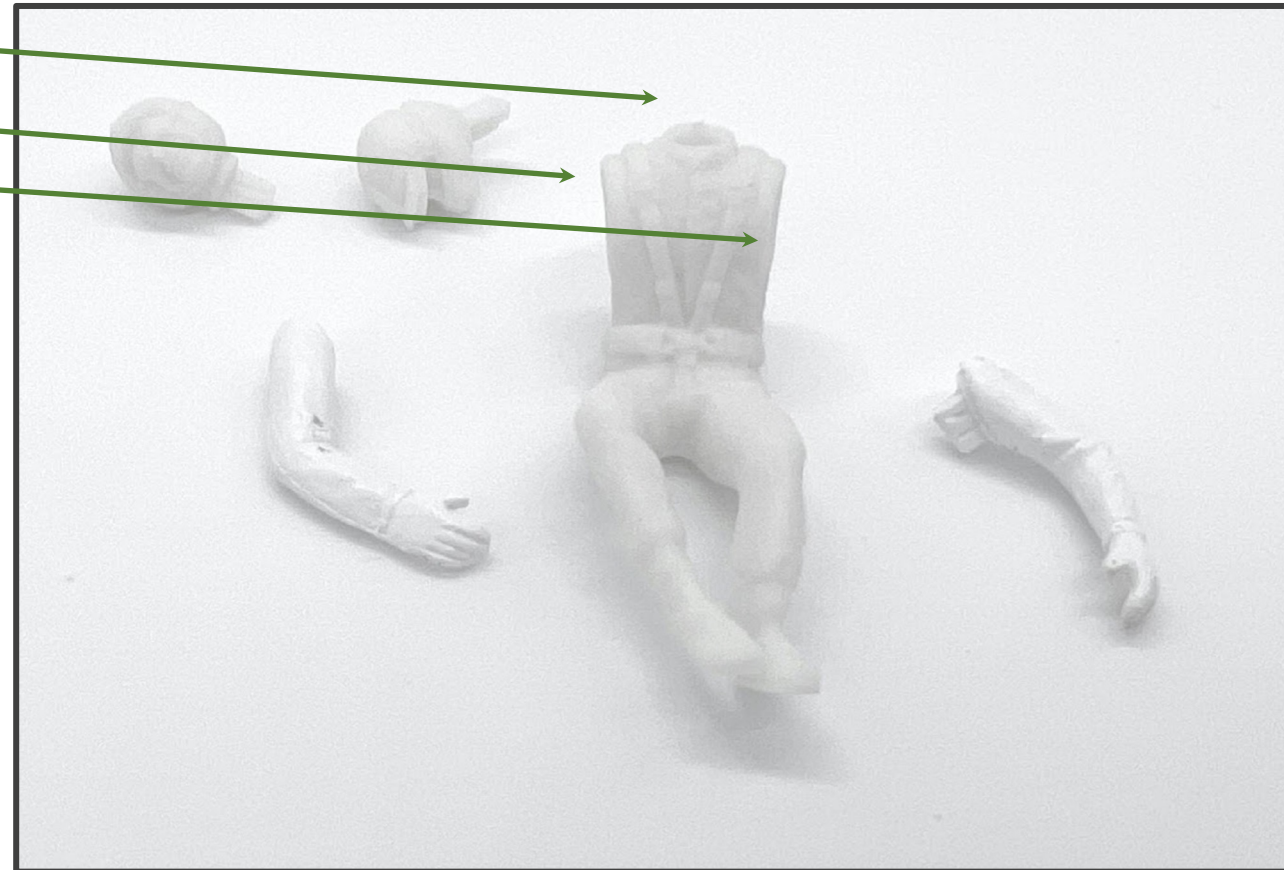
Bag D – Interior Parts for
Cockpit, Driver Parts and
Exterior Parts

Bag E – Exterior Valences, Grills and Grill Housings



Cockpit Interior Sub-Assembly - Driver Body & Arms, Glue and Assemble.

Choose between two driver head options.
Glue the head and the arms to the driver body.
Leave aside to dry.



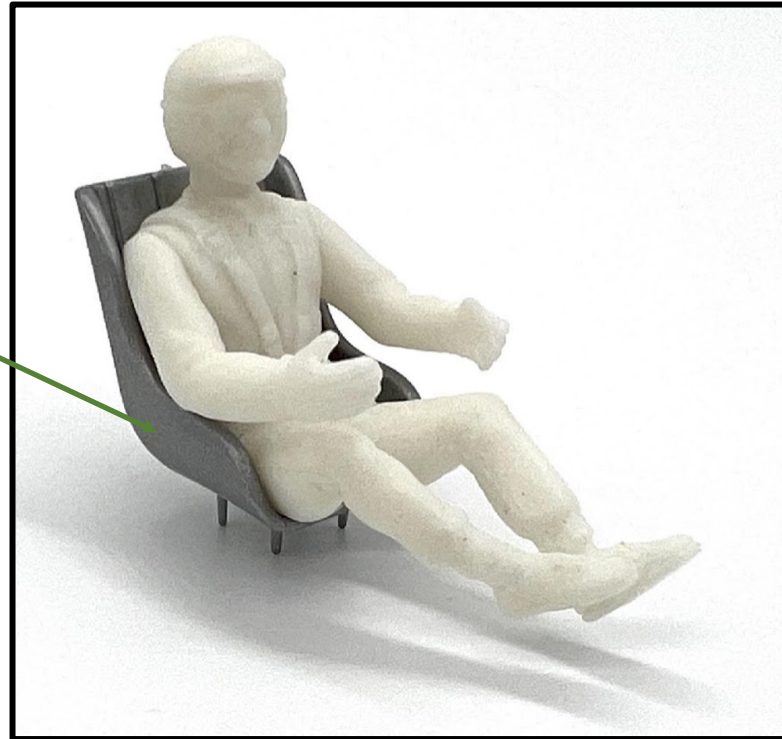
When figure is assembled, it is a good idea to get the decoration done on the figure and allow to dry before inserting into seat.



Cockpit Interior Sub-Assembly – Glue Driver to Seat, Leave to allow glue to dry.



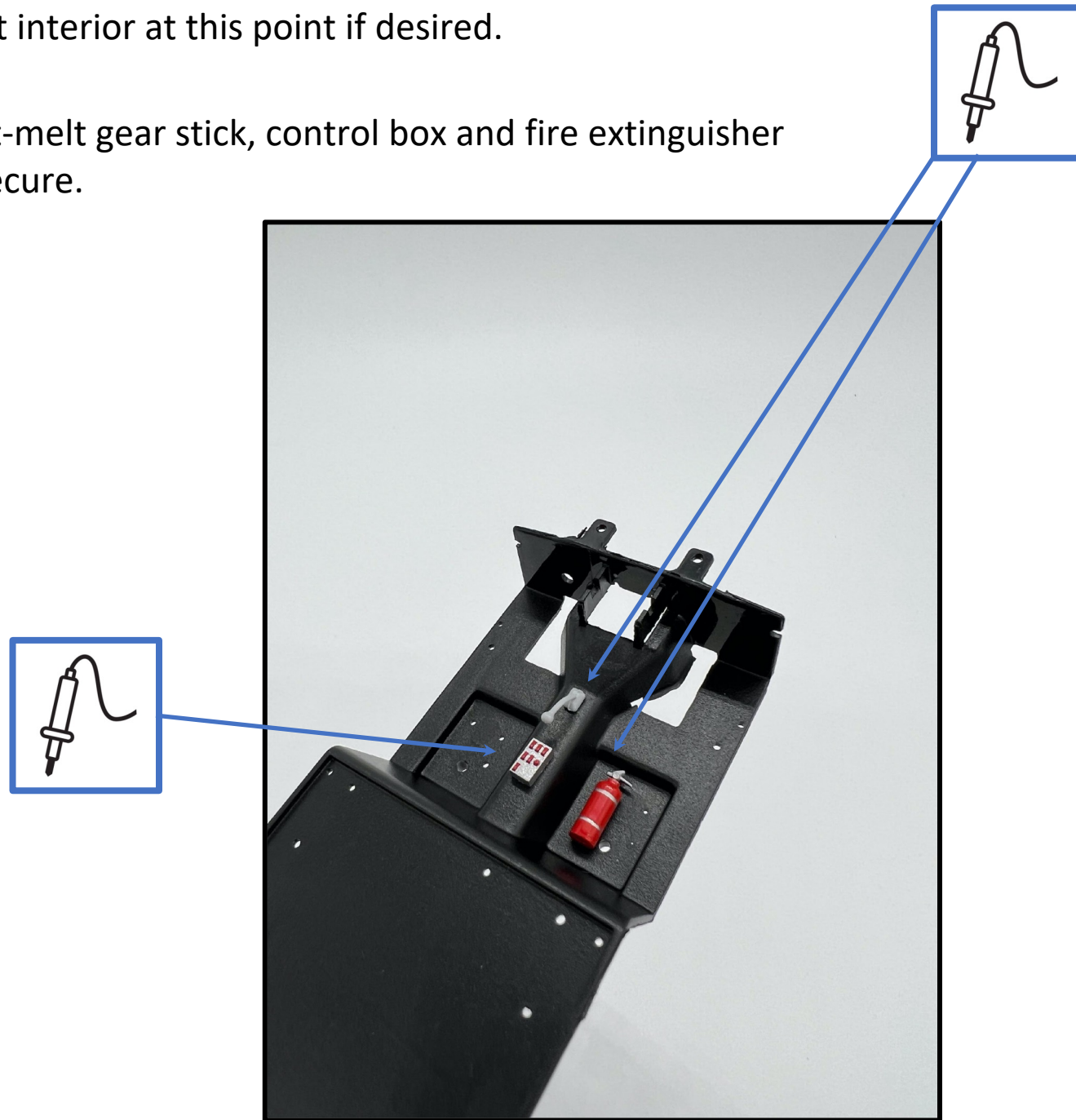
Glue the driver body to the seat.
Leave aside to dry.



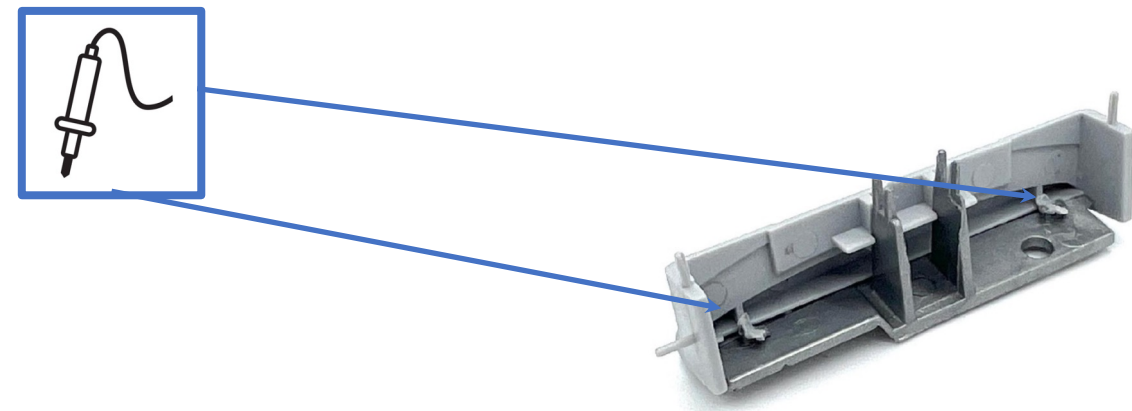
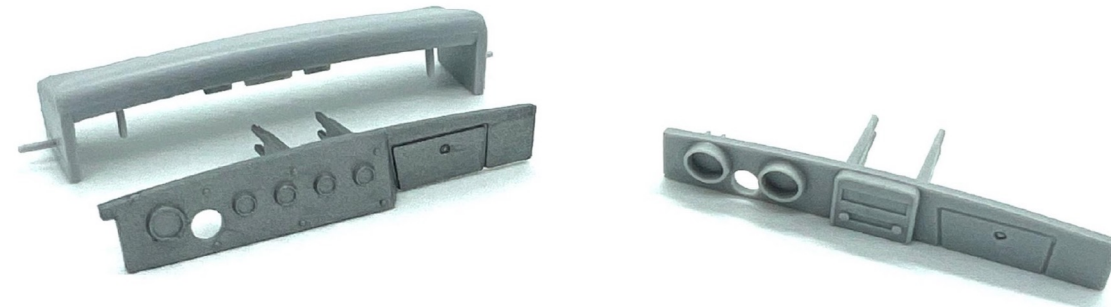
Cockpit Interior Sub-Assembly - Locate and Position

Paint interior at this point if desired.

Heat-melt gear stick, control box and fire extinguisher to secure.

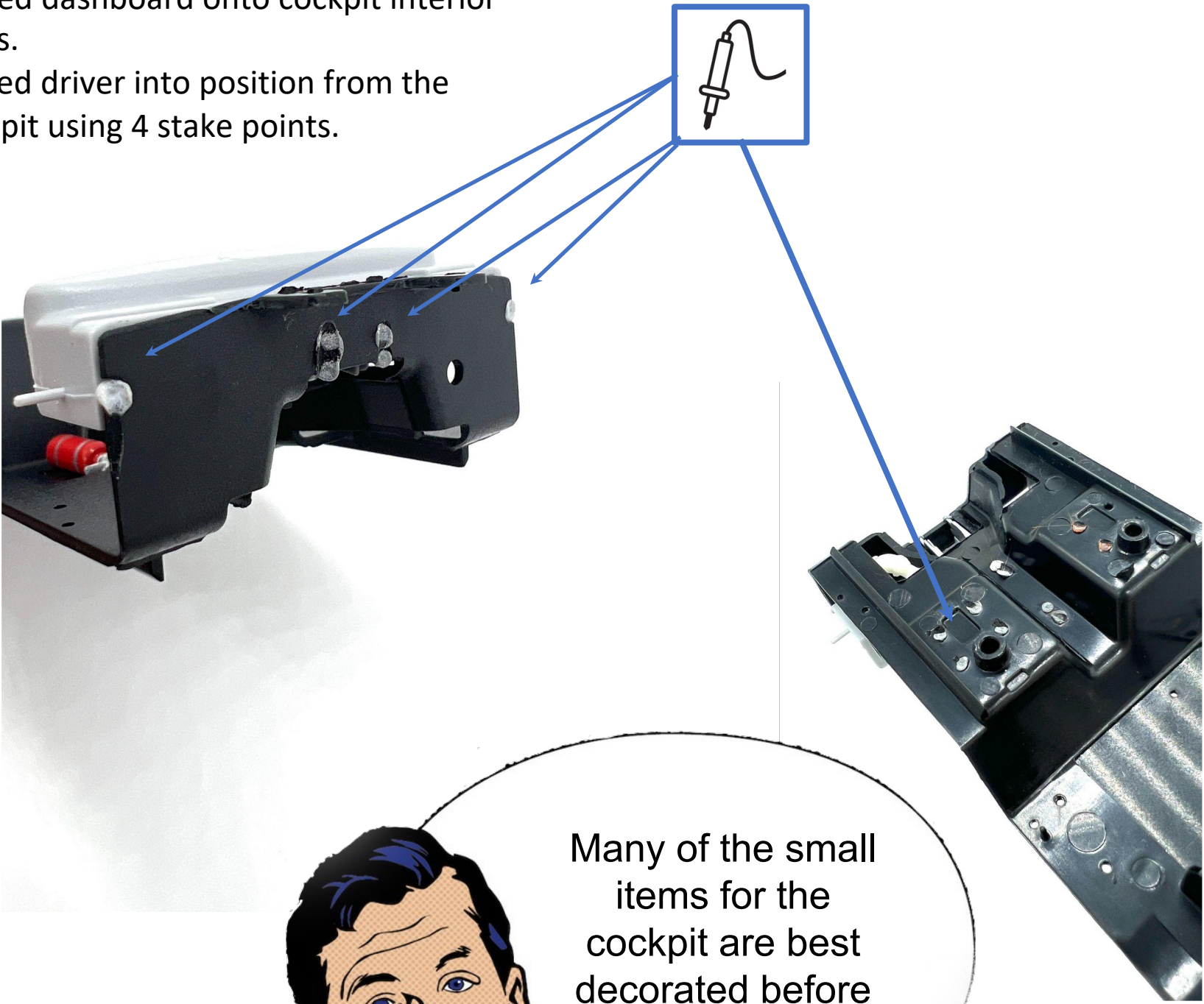


NOTE: There are two options for the dashboard - a 'racer' style dashboard (left) and a 'street' style dashboard (right). Heat-melt chosen dashboard front to the dashboard top.



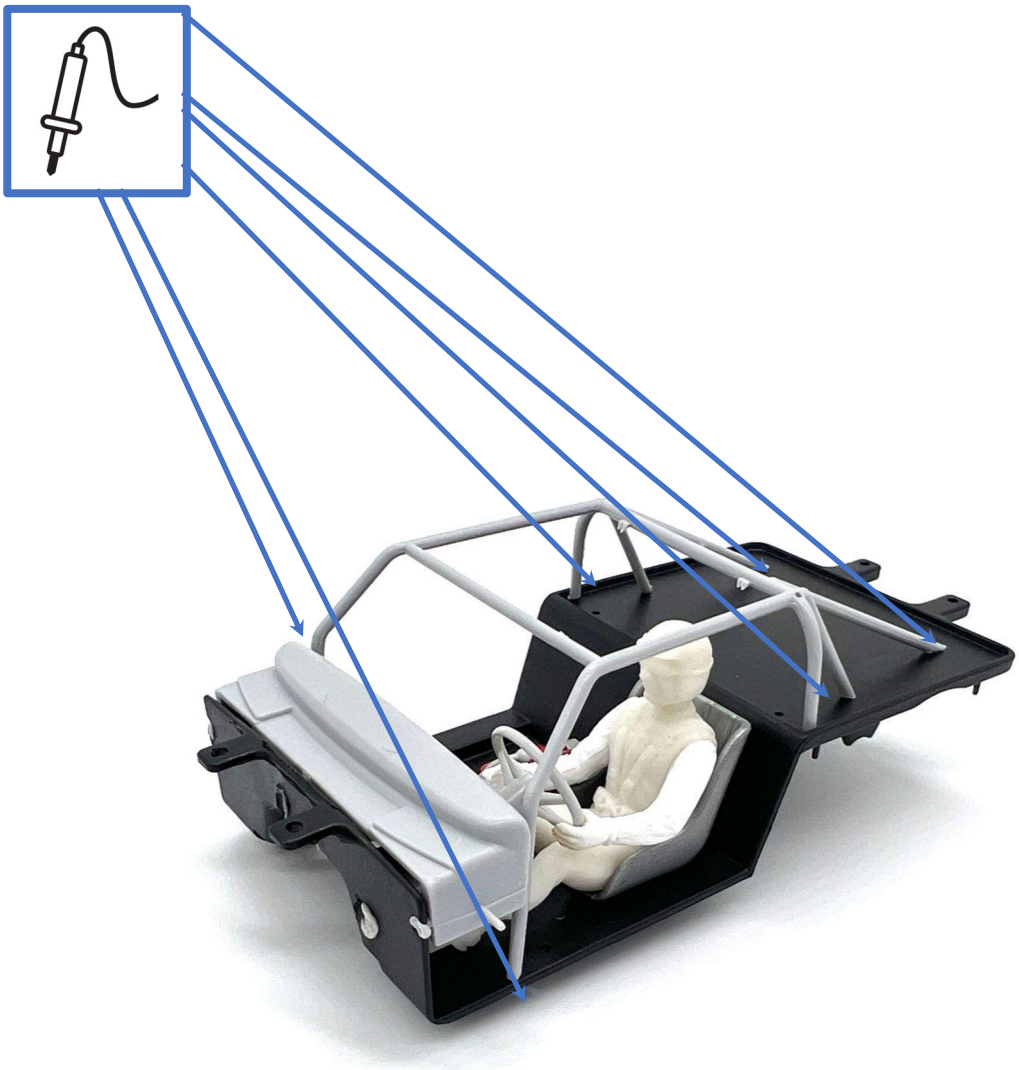
Cockpit Interior Sub-Assembly - Locate and Position

Heat-melt assembled dashboard onto cockpit interior using 6 stake points.
Heat-melt the seated driver into position from the bottom of the cockpit using 4 stake points.

A cartoon illustration of a man with dark hair, wearing a blue collared shirt and a red jacket. He is smiling and has a speech bubble coming from his mouth.

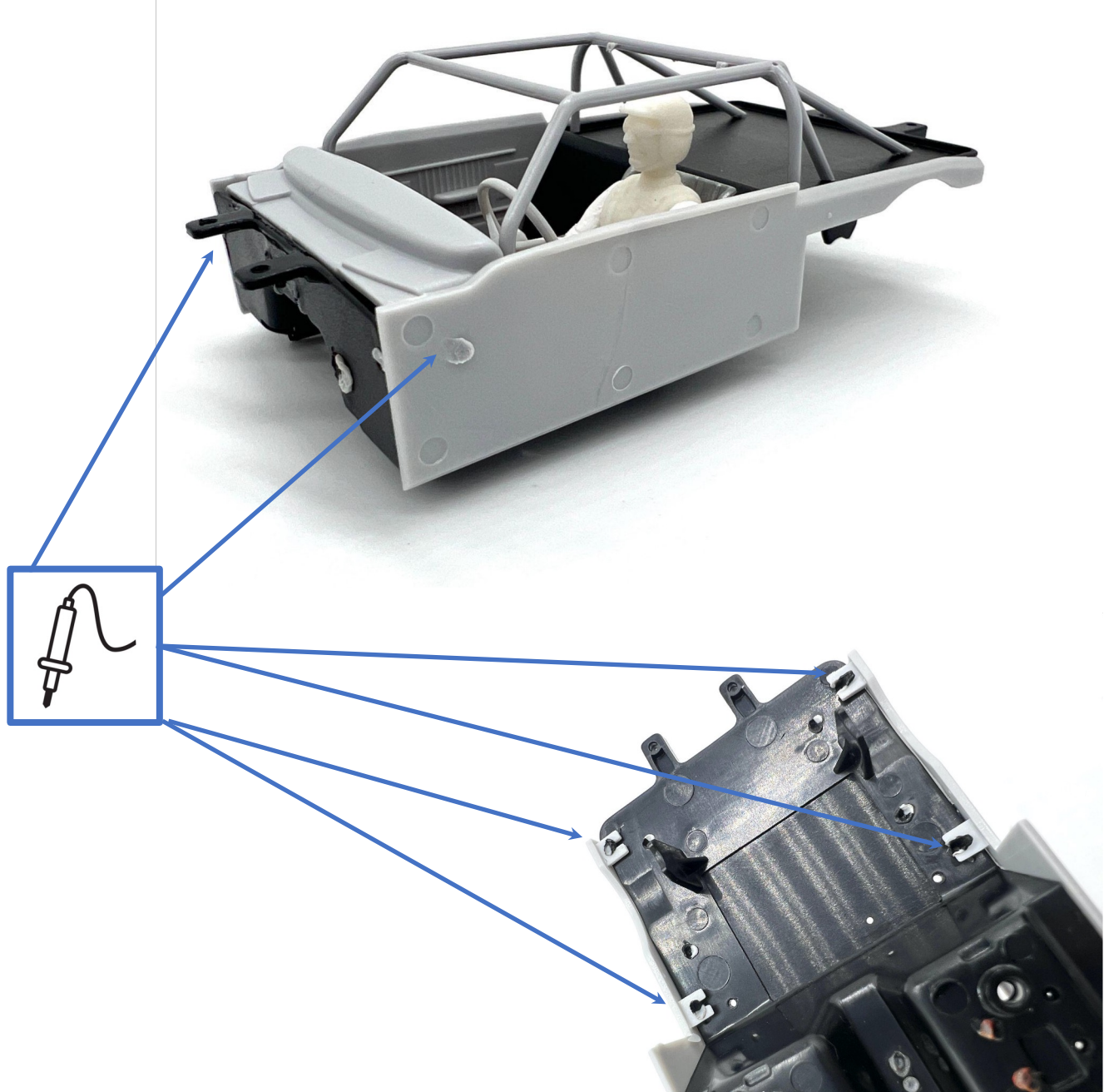
Many of the small items for the cockpit are best decorated before fitting into place.

Heat-melt the roll cage onto the cockpit interior from below.



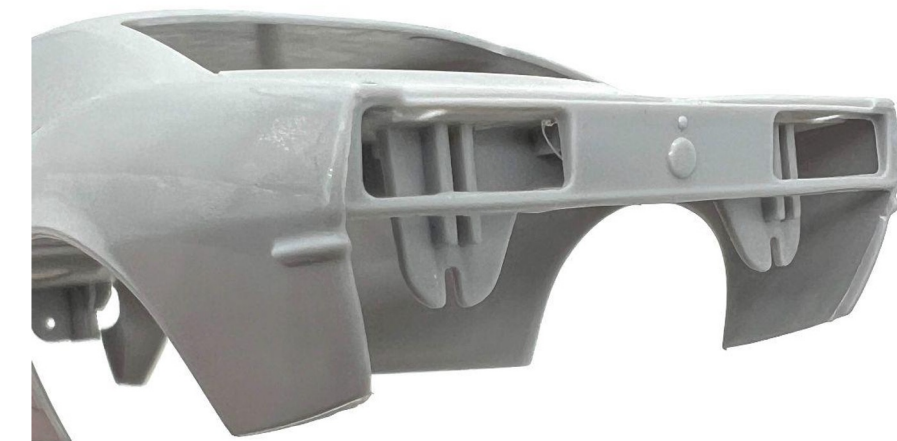
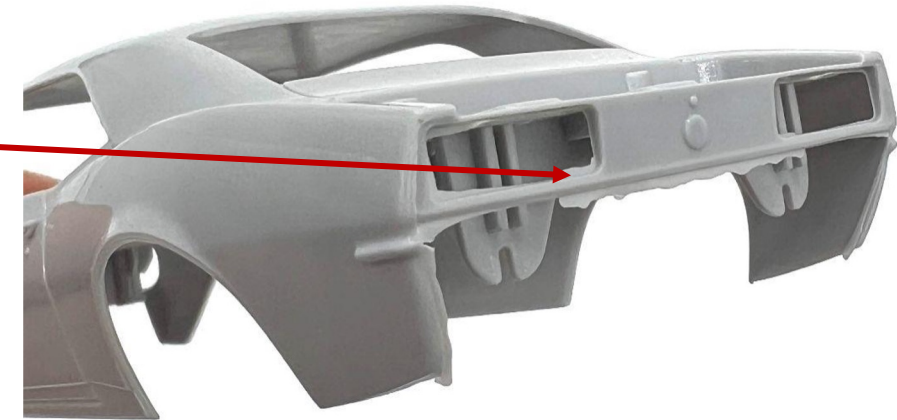
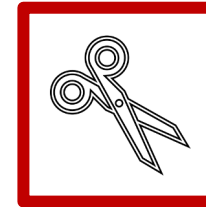
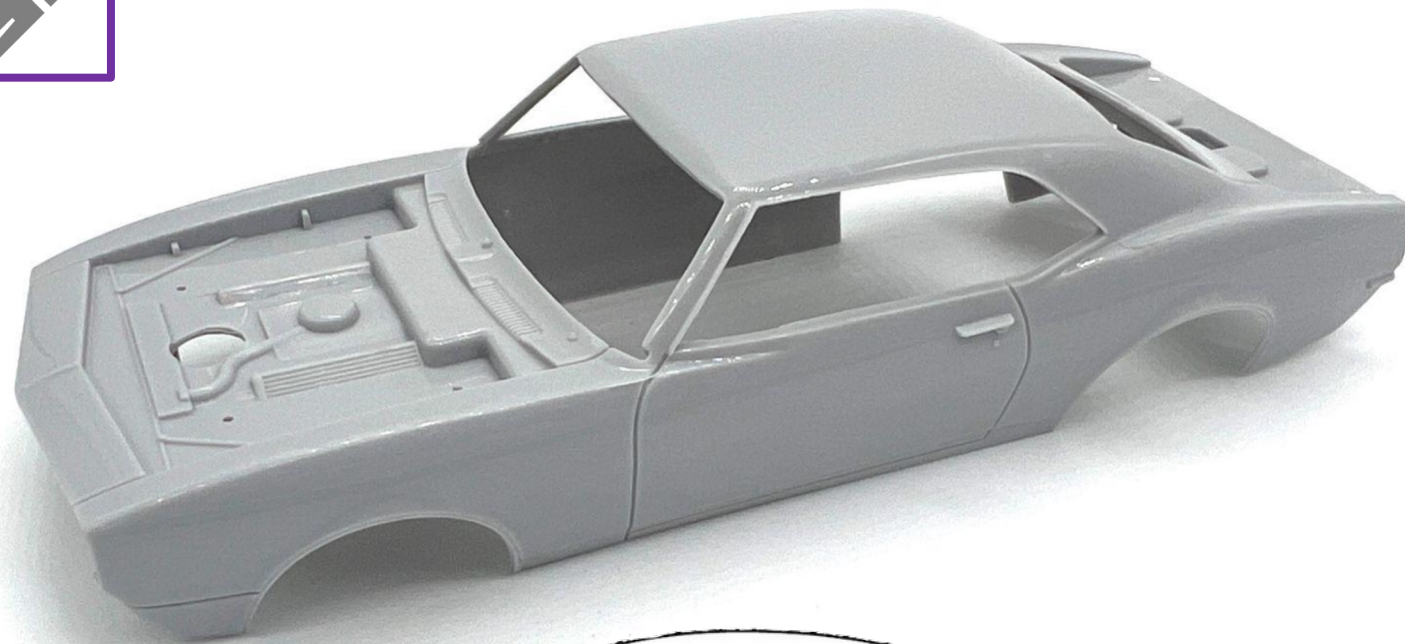
Cockpit Interior Sub-Assembly – Heat-Melt Side Panels onto Cockpit to Complete

Heat-melt side panels onto the cockpit to complete the interior.



Bare Body Shell – Paint Before Attaching Other Parts

NOTE: The body shell should be painted now, before installing remaining components. **REMEMBER** to include all other body panels in the painting process that you wish to have the same colour as the body shell (hood/bonnet, boot/trunk etc.).



The body shell does not need a primer coat before painting. Use a good quality acrylic paint, either air brush or spray/rattle can.

NOTE: Snip off any extra flash left over from the injection molding process before fitting lights and assembled rear valence. Before (top), after (bottom).



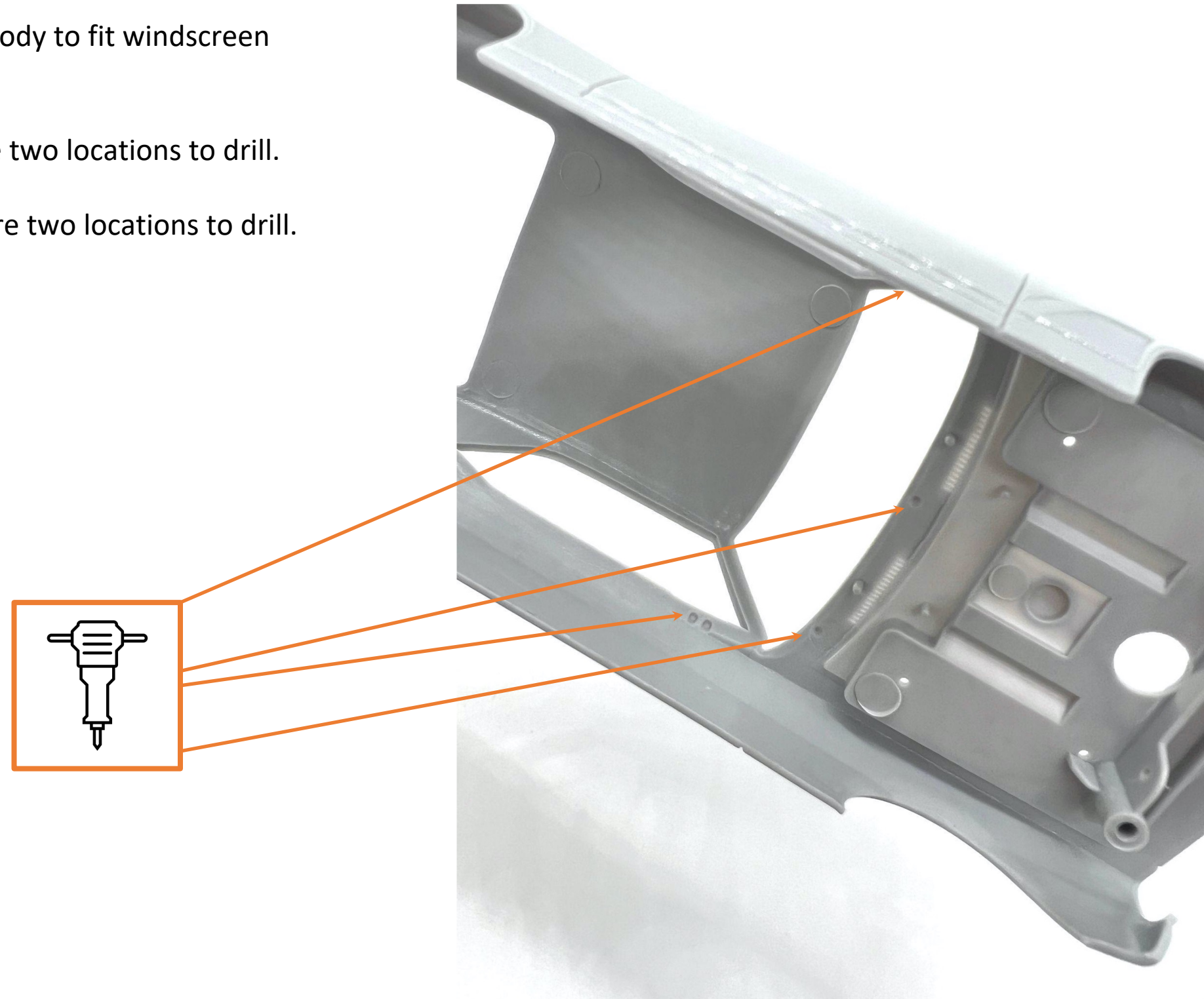
Cockpit Interior Sub-Assembly – Drill for Windscreen Wipers and Side Mirrors (Optional)

To assemble the street car you will need to drill into the plastic body to fit windscreen wipers and/or wing mirrors.

Inside the body shell, underneath the front windscreen there are two locations to drill.

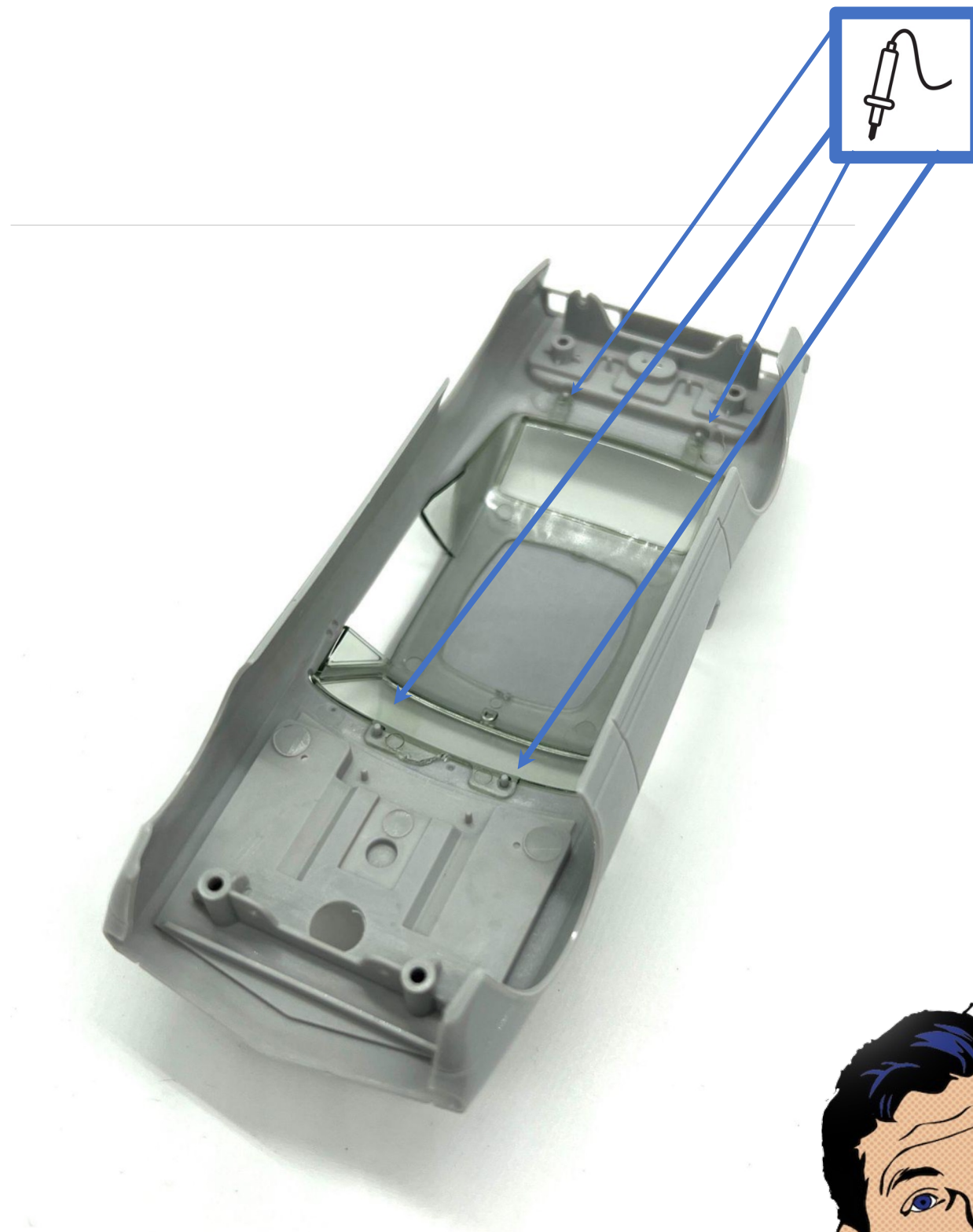
On each side of the car below the driver/passenger door there are two locations to drill.

Steadily drill the plastic out with a small power tool.



Upper Body Sub-Assembly – Insert Glass Piece

Ensure the glass window is correctly aligned (check from the Outside also). When in position, click the side windows into place and heat melt stake points to secure.



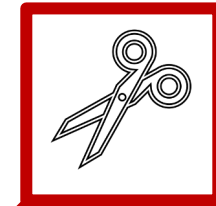
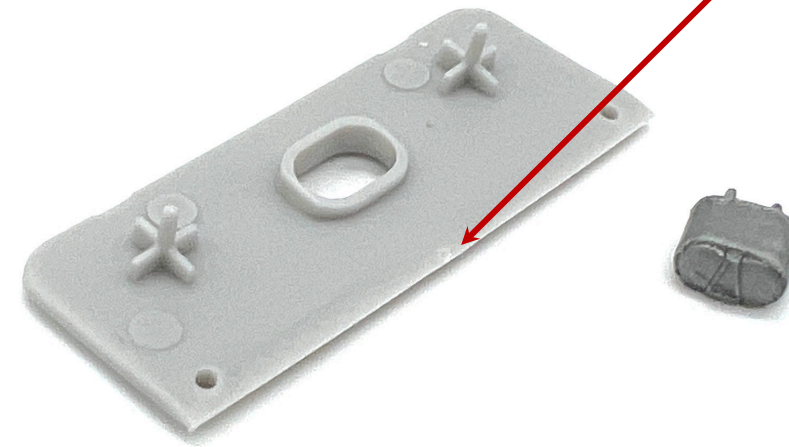
Before fitting the window unit, this is a good time to add any silver painted trim to the edges of the windows.



Upper Body Sub-Assembly – Front Bonnet/Hood and Boot/Trunk Lid



Choose from three bonnet/hood options.
Choose from two boot/trunk lid options.

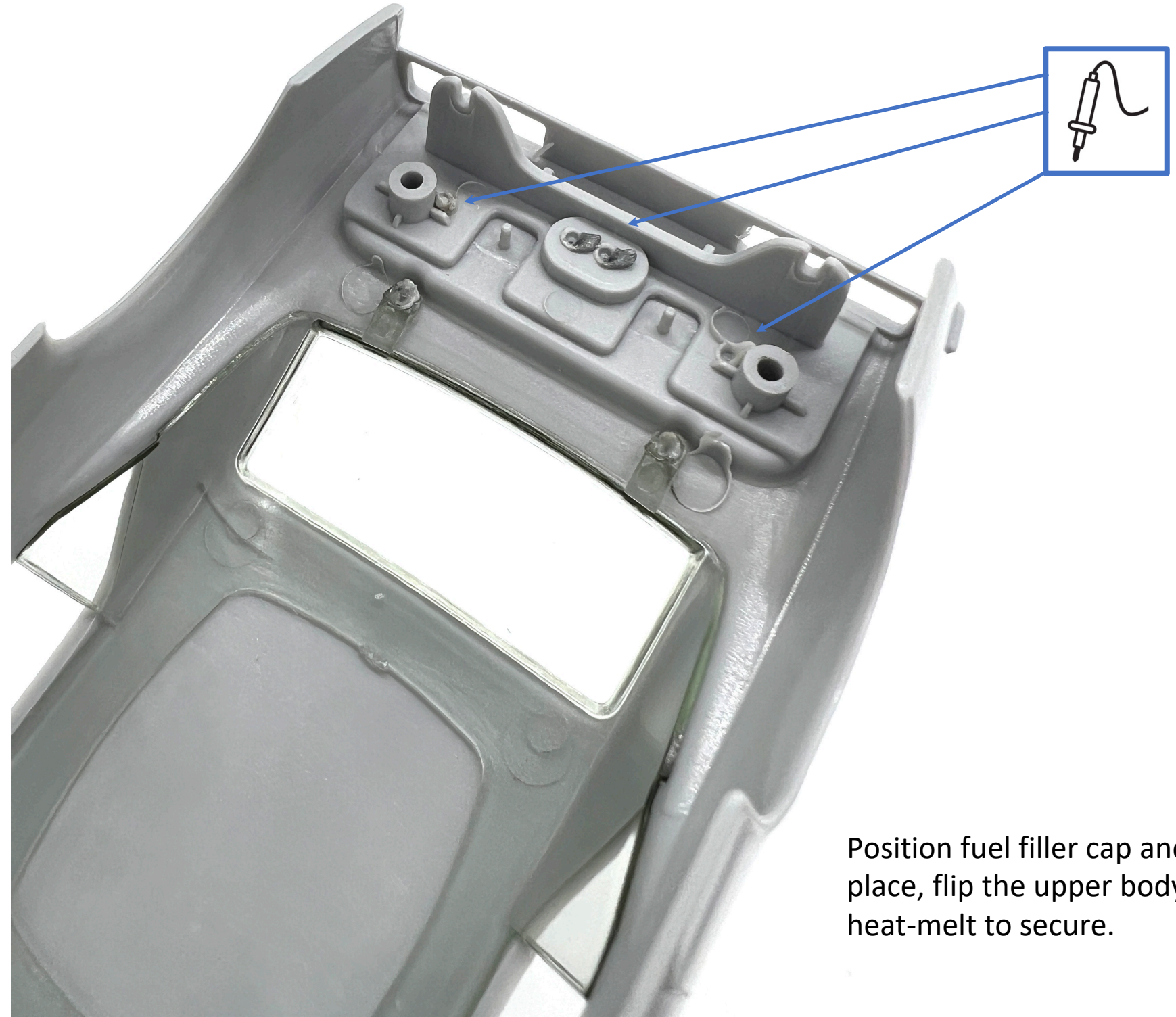


Snip off any extra flash left over from the injection molding process.

NOTE: If you choose the boot with a hole, you will need the fuel filler cap for the next stage of assembly.



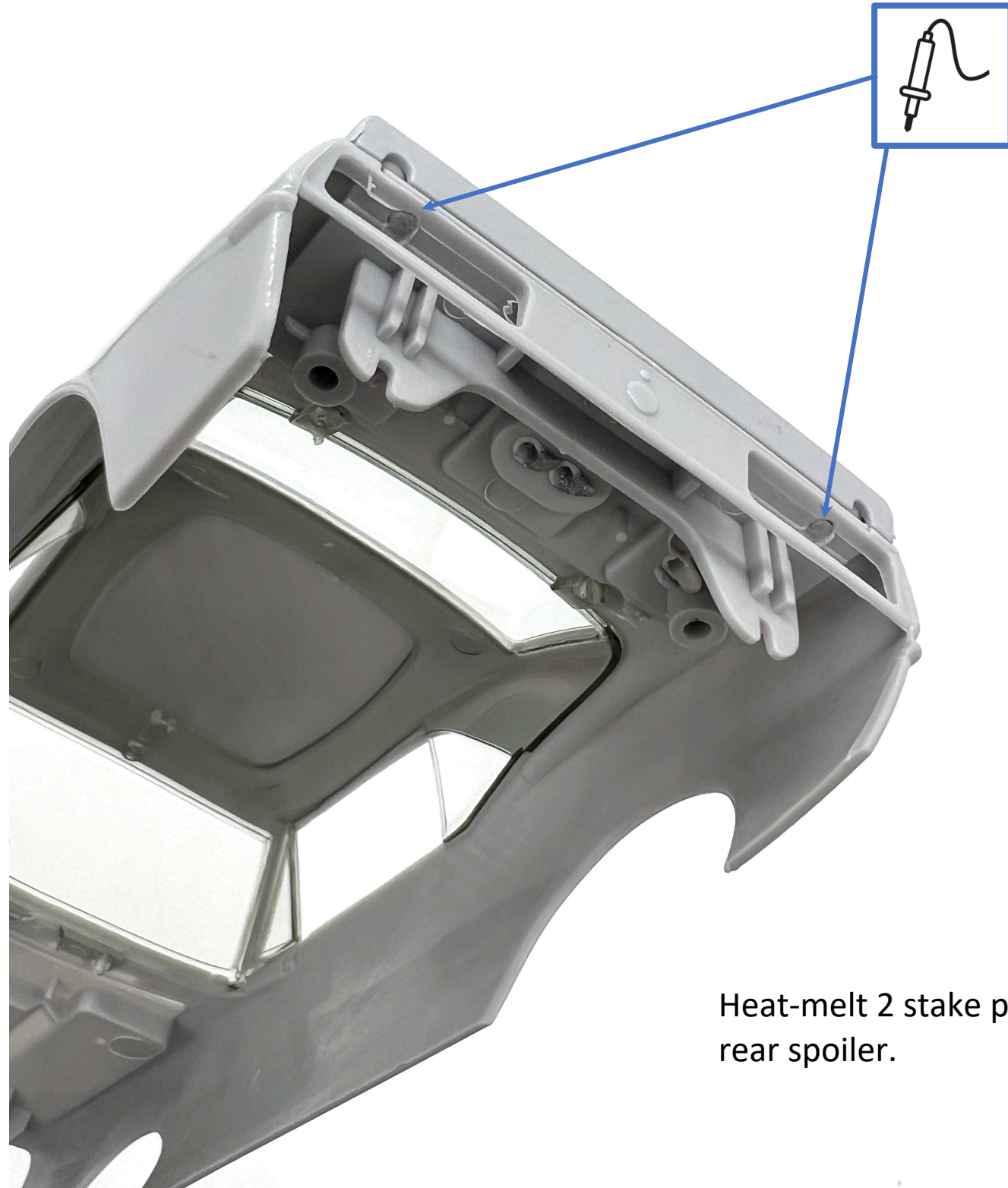
Upper Body Sub-Assembly – Boot



Position fuel filler cap and boot in place, flip the upper body over and heat-melt to secure.



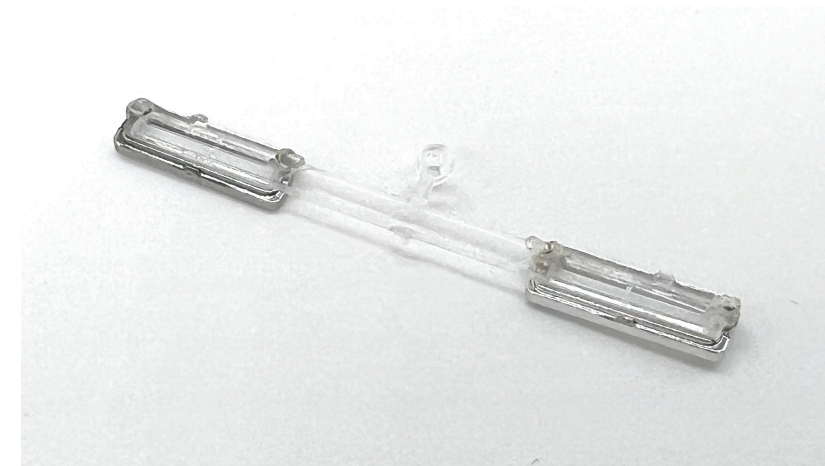
Upper Body Sub-Assembly – Spoiler



Heat-melt 2 stake points to secure the rear spoiler.



Upper Body Sub-Assembly – Rear Light Unit & Valence



Heat-melt 2 chrome light surrounds to the rear light unit.

For best results, paint the inside rear of the clear light bar white and then add a red semi-opaque color to the outside (visible) surface of the lenses on each side.



Upper Body Sub-Assembly – Rear Light Unit & Valence



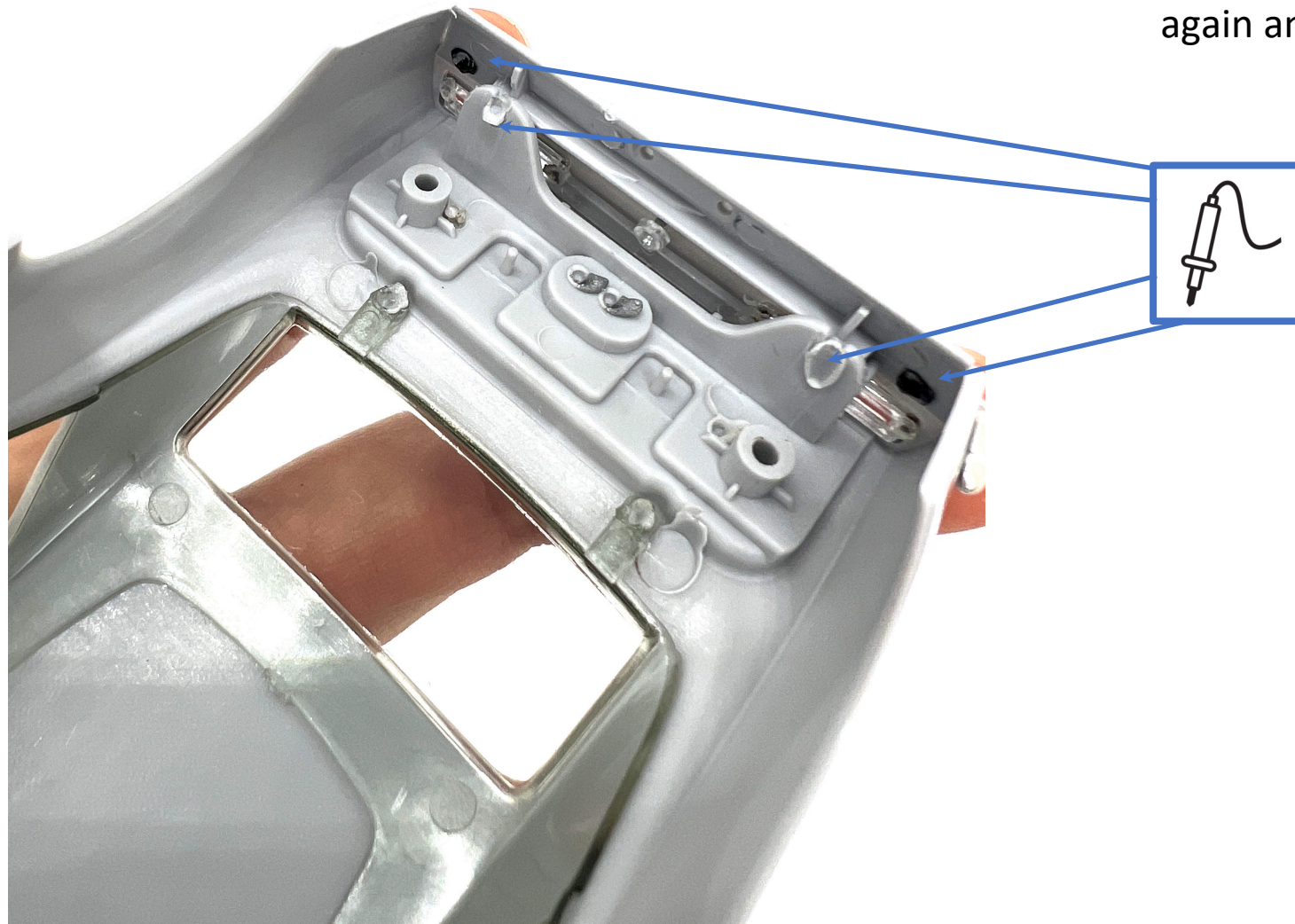
Offer up the rear light unit and push home gently. Use a pencil or a small screwdriver to poke the lights through if necessary.



Upper Body Sub-Assembly – Rear Light Unit & Valence

Slide rear valence into place and hold it tight against the body with your fingers. Apply pressure and heat melt from the inside to secure.

To fit the rear chrome bumper into place, apply pressure again and heat-melt from the inside to secure.

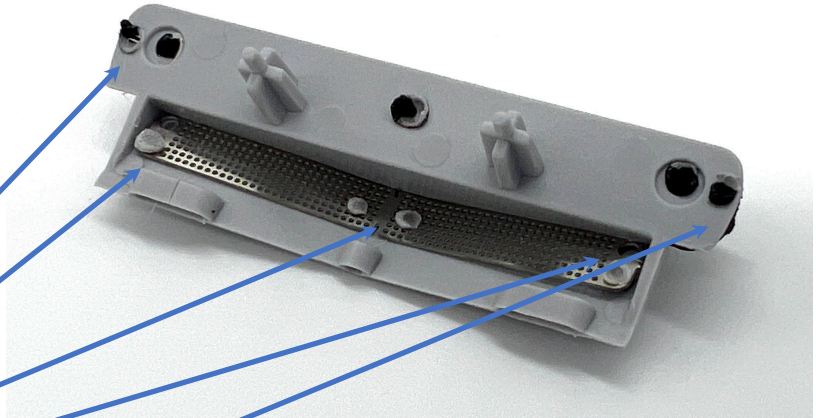
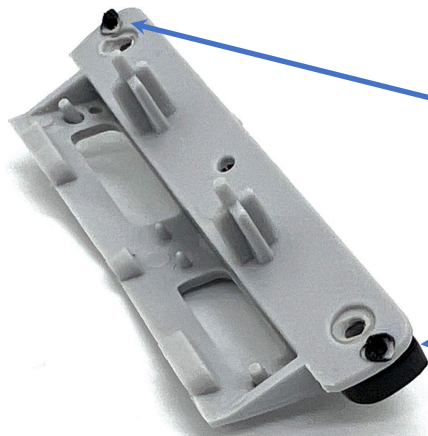


Upper Body Sub-Assembly – Front Grill & Valence

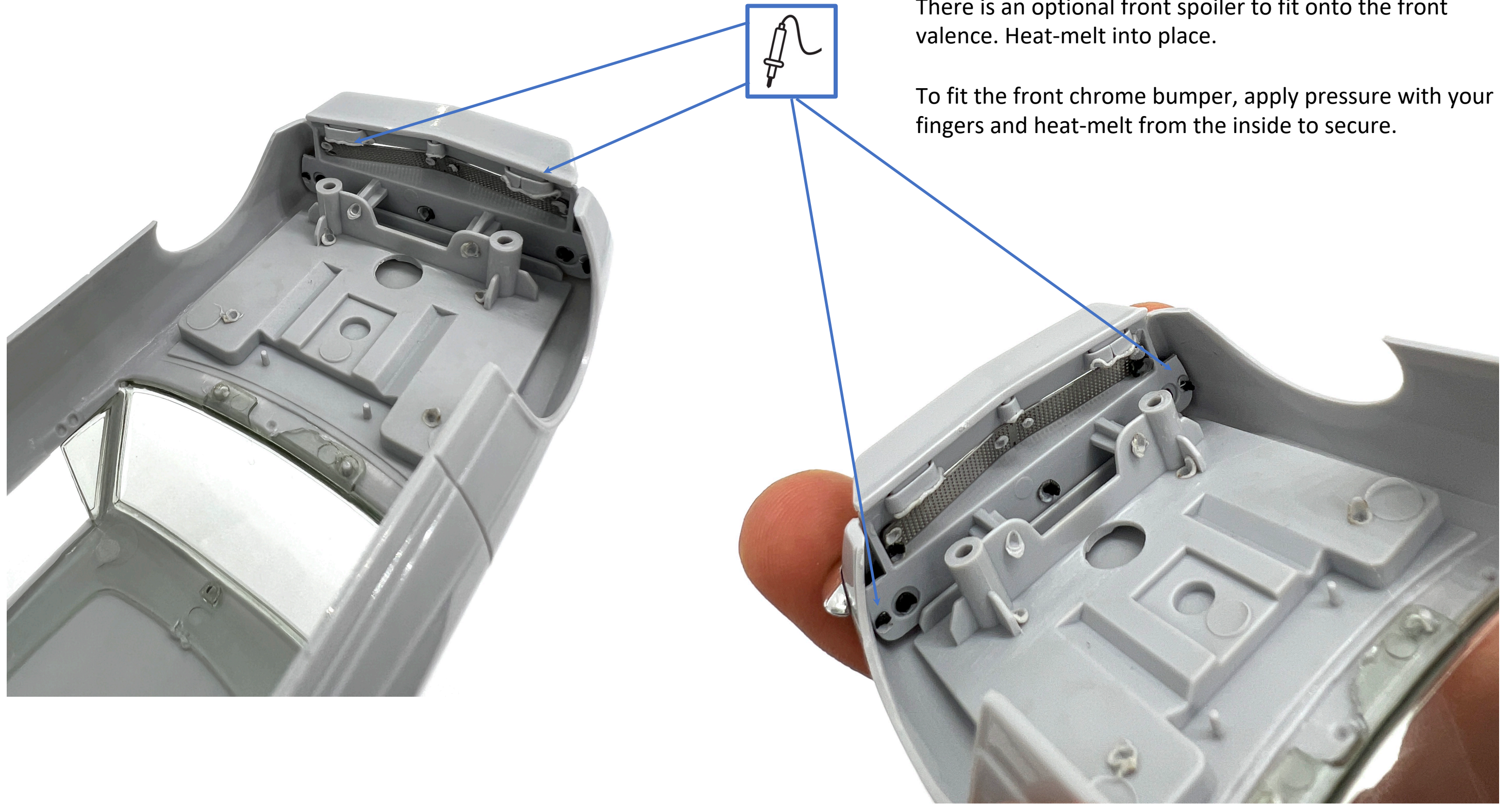
Option 1: Heat-melt the front light unit into the housing. Then poke the small, oblong lights through and heat-melt to secure (watch out, these are fiddly). Heat-melt assembled housing onto the front valence.

The Chevy Camaro KIT comes with various parts to fit the front grill two ways. Pick your parts now.

Option 2: Heat-melt the RS plastic grill into the grill housing, then heat-melt to the front valence from behind. Heat-melt the silver mesh grill into the front valence from behind.



Upper Body Sub-Assembly – Front Grill & Valence



There is an optional front spoiler to fit onto the front valence. Heat-melt into place.

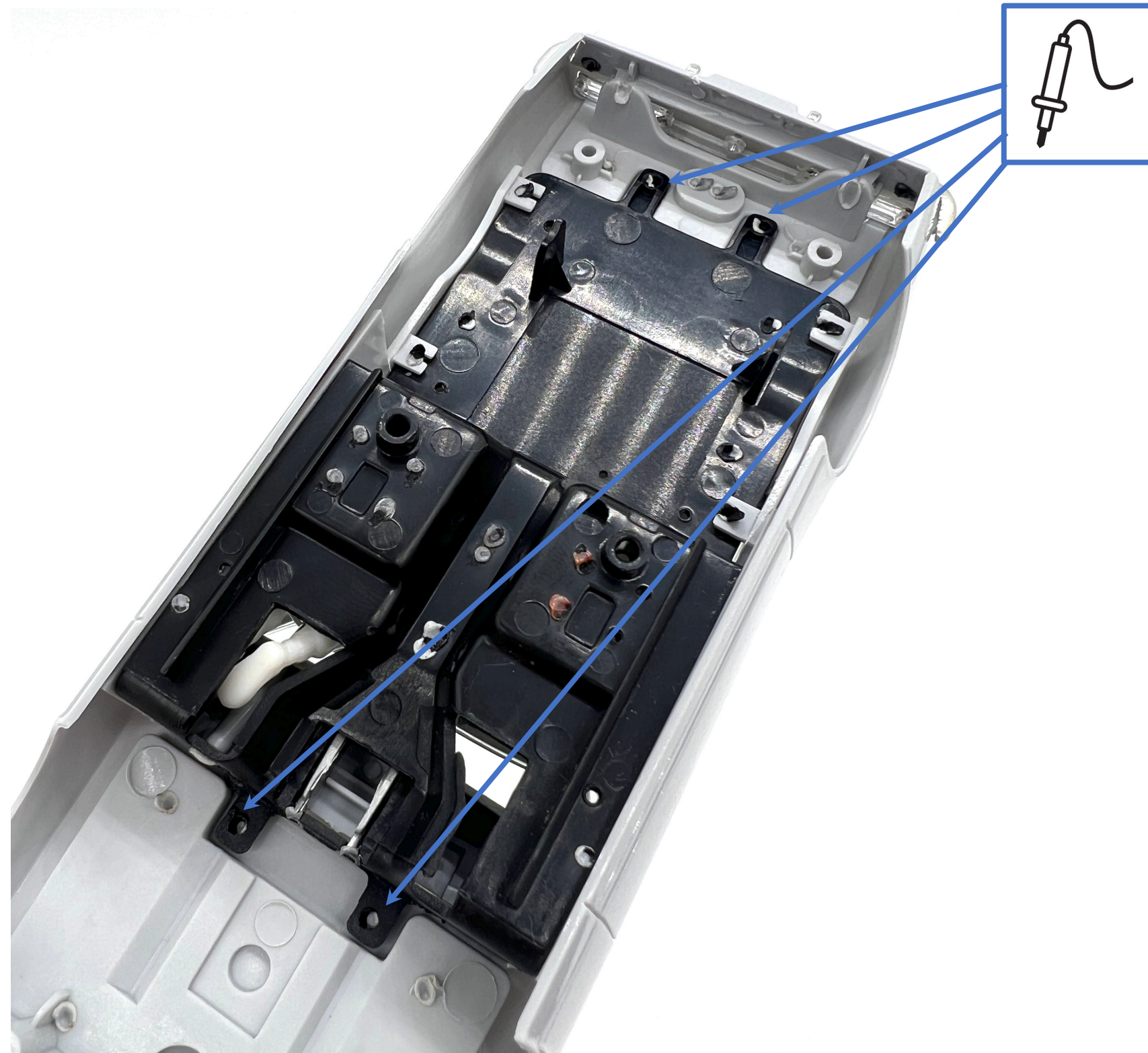
To fit the front chrome bumper, apply pressure with your fingers and heat-melt from the inside to secure.



Upper Body Sub-Assembly – Cockpit Interior (Heat-Melt into Body)

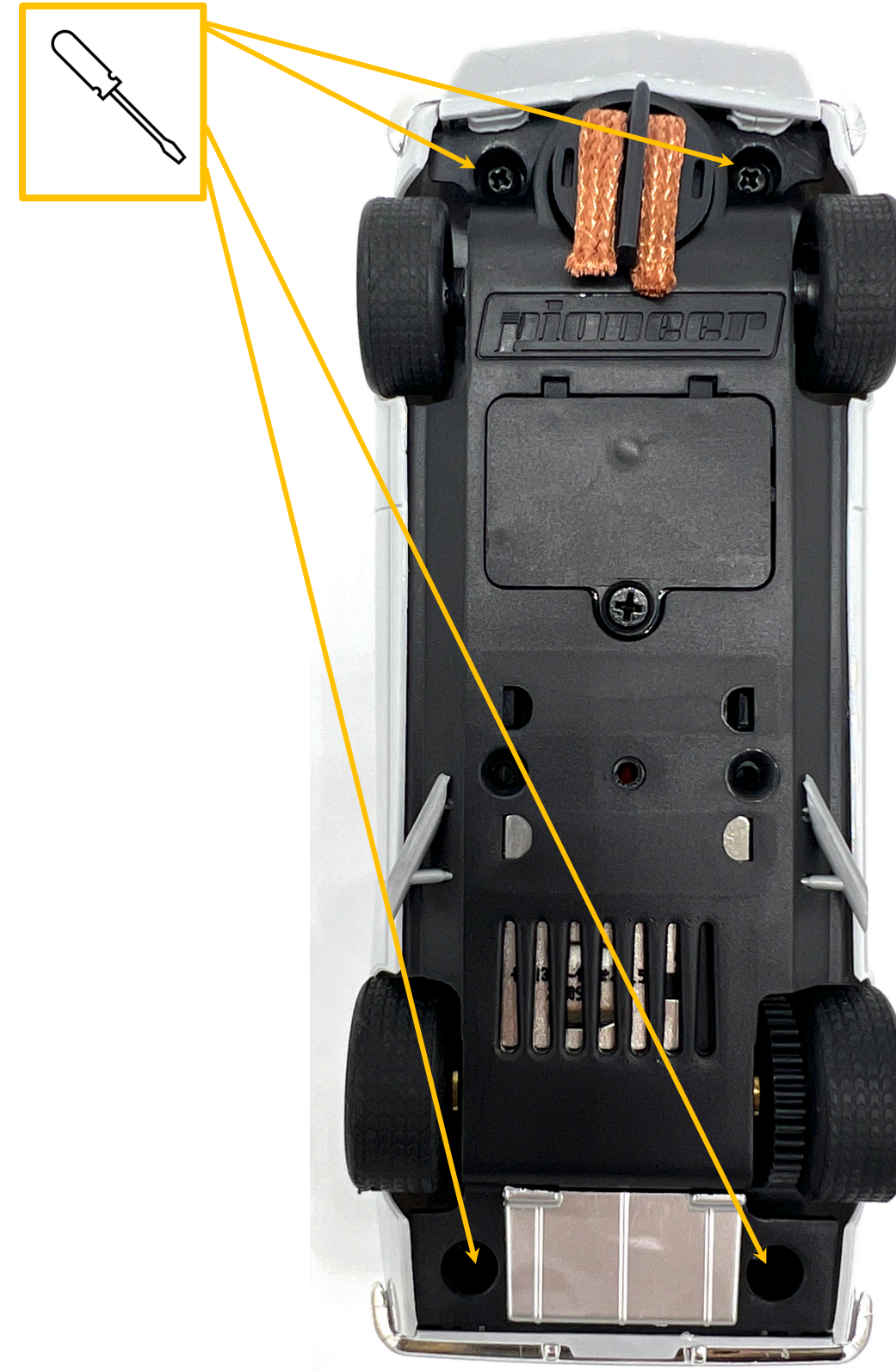
The cockpit interior may be glued or heat-melted onto the 4 location pins inside the body.

NOTE: Ensure to clean the interior faces of the glass unit before fitting the cockpit interior in case of fingerprints or dust particles.



General Final Assembly

Screw in all 4 body screws to secure the assembled body to the chassis.





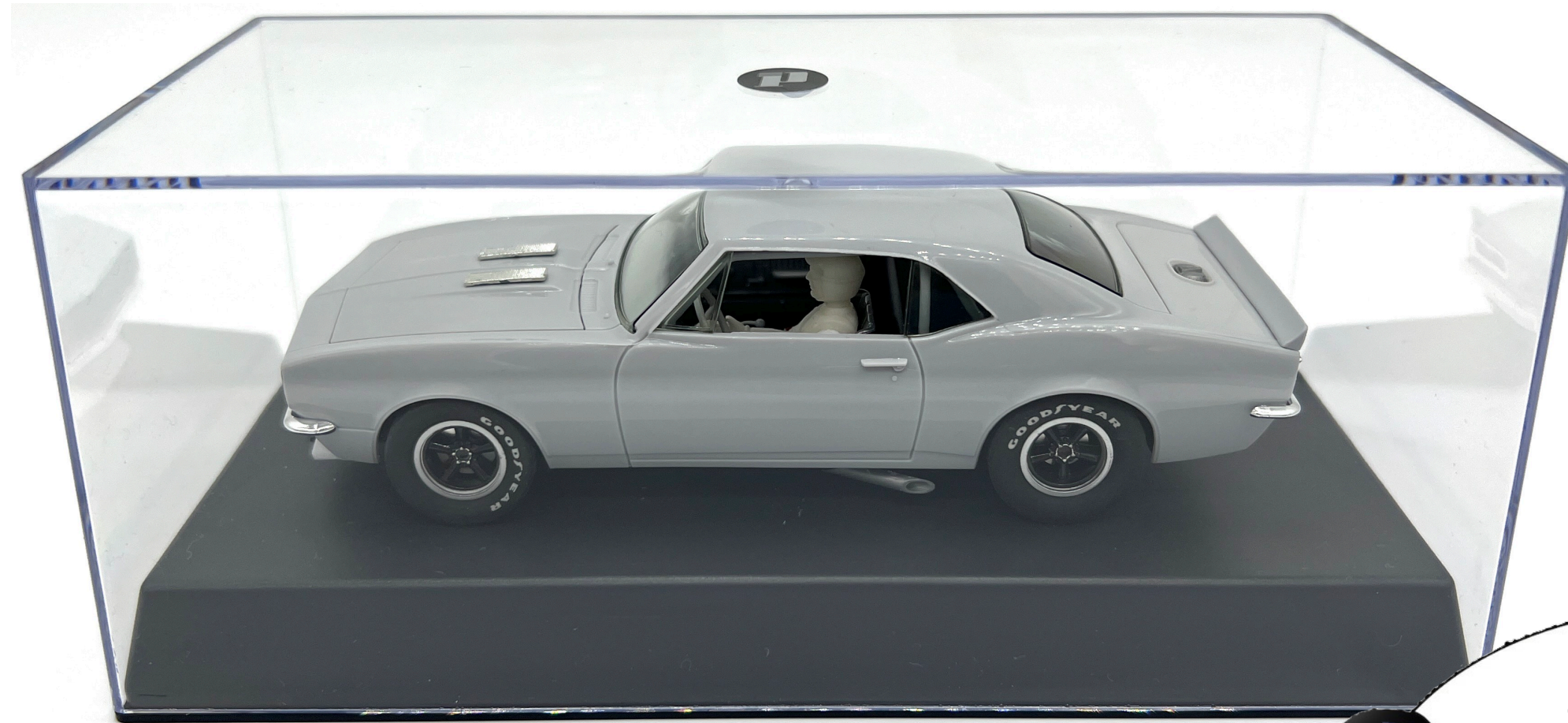
PAIN'T IT YOURSELF KIT



Your Pioneer Chevy Camaro model is now ready to race!



Visit: www.pioneerslotcars.com for more information on available KITS and other Pioneer Slot Car models.



Thank you for your purchase of a Pioneer slot model kit. We hope you have a great deal of fun racing it.

